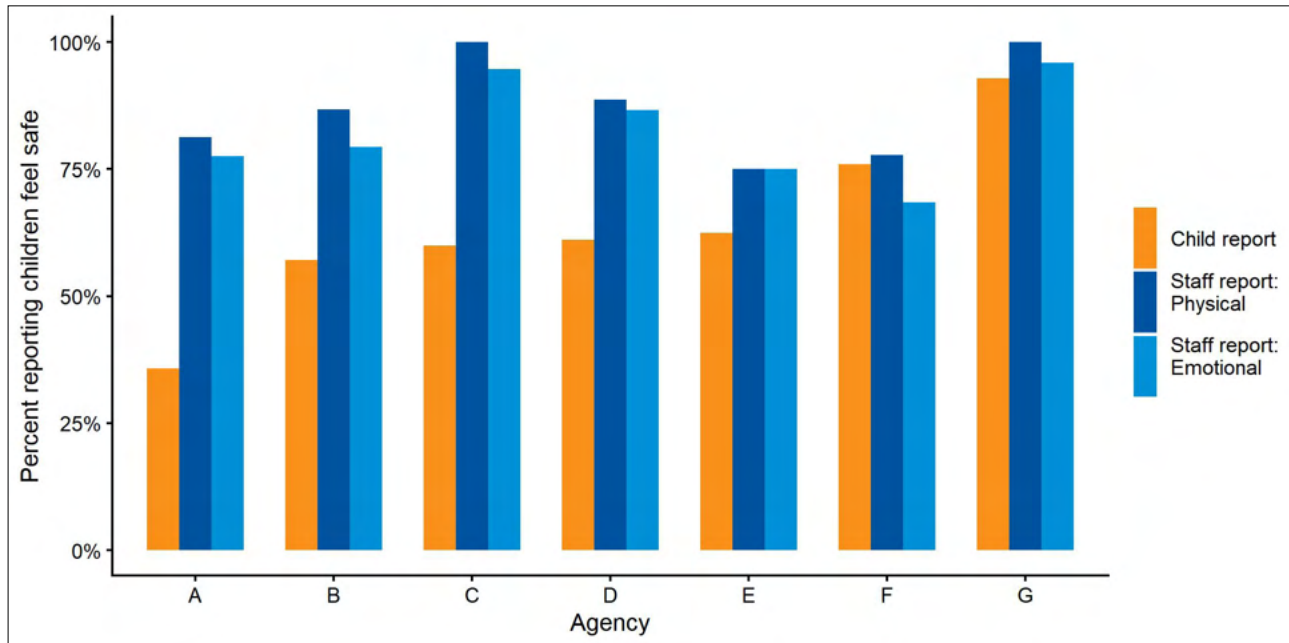




## Staff perceptions of child safety are higher than those reported by children



In seven agencies, the staff and children completed surveys concurrently, so staff and child perceptions of child safety could be compared. Child report is the percent of children who responded “Always” or “Usually” to the question “I feel safe here.” Staff were asked two questions: “Children feel physically safe here” and “Children feel emotionally safe here.” The graph shows the percent of staff who responded “Agree” or “Strongly Agree” to each question.

In general, staff perceptions of children feeling physically safe differed very little from their perceptions of children feeling emotionally safe, with only two agencies, B and F, having differences greater than 5 percentage points. However, agencies varied in the degree to which staff agreed or strongly agreed that children felt safe, ranging from nearly 100% in two agencies (C and G) to about 75% in two agencies (E and F).

In most agencies, staff’s perceptions did not align well with those of the children. The percentages were similar in only two of the agencies, F and G, while in one agency, Agency A, the difference was about 40 percentage points.

Sellers, D. E., Smith, E. G., Izzo, C. V., McCabe, L. A., & Nunno, M. A. (2020). Child feelings of safety in residential care: The supporting role of adult-child relationships. *Residential Treatment for Children & Youth*, 37(2), 136–155. <https://doi.org/10.1080/0886571X.2020.1712576>.